

Academic Summer School for Middle School offers courses for students that will be exiting Grades 5-8 at the end of the 2011-2012 school year and is open to all students, including students from outside of the BPS district. Our review classes adhere to the curriculum of the Birmingham Public Schools and our advanced classes will challenge students based on their individual talents and abilities.

Classes run Monday through Friday and are offered during one of two time slots; 7:45-9:45am or 10:00am - 12:00pm. Because we offer classes in both mathematics and language arts for review as well as classes that challenge students with advanced curriculum, parents are able to tailor a summer school program that will best meet their child's needs.

Classes are taught by certified teachers who make the learning environment fun and engaging. Small class sizes encourage a setting in which each student can thrive under the individual attention, instruction and assistance that is provided.

Academic Summer School is a great way to reinforce concepts from the previous school year as well as challenge students and excite them about academic possibilities for the upcoming school year.

To register for academic summer school or review the complete course descriptions, please visit the Birmingham Community Education website at:

www.communityed.net

Registrations are accepted on-line only. If you need assistance with the on-line registration, please call (248) 203-3800.

Exiting 8th Graders: Transition to High School July 9 - July 25, Monday-Friday

**Transitional Mathematics – Fee \$210.00*
7:45-9:45 AM**

The focus of the transitional math program will provide a continual review and reinforcement of basic math skills as well as a focus on new concepts, thus creating a comprehensive program that prepares students for Algebra in ninth grade. Emphasis will be placed on teaching students to be proficient with computational skills in the rational number system. A large emphasis will be placed on solving equations with one and two variables, graphing on the rectangular coordinate system, simplifying variable expressions, radicals, exponents, solving inequalities, understanding and solving linear models, and word problems. Daily practice will be assigned and formal testing will occur to strengthen test taking skills and to identify areas requiring additional effort.

**Transition into High School English - Fee \$210.00*
10:00 AM-12:00 PM**

The transition from academic demands in middle school to those in high school can be stressful. One area with a significant increase in expectations is English. This course is designed to give students guided practice in meeting those new expectations in the level and amount of reading, writing and research across the curriculum. Students will read a variety of texts from across the disciplines and will receive instruction in research skills and use of technology as well.



2436 W. Lincoln Ave., Suite F101
Birmingham, MI 48009
Phone (248) 203-3800
Fax (248) 203-3818



ACADEMIC SUMMER SCHOOL



MIDDLE SCHOOL PROGRAM

For Students Exiting Grades 5-8

Program Dates*

**June 19 – July 6 (No Class on July 4)
*8th Grade Transition to High School Classes (July 9 – 25)**

**Register before May 25th and save \$10.00 per class!!
Residents of the BPS District are eligible for an additional
\$10.00 discount per class.**

***Review & Advanced Classes
Available!!***

***All classes are held at
Seaholm High School***

CLASSES FOR EXITING 5TH GRADERS

CLASSES FOR EXITING 6TH/7TH GRADERS

CLASSES FOR EXITING 8TH GRADERS

7:45 AM – 9:45 AM

CLASS TIMES

10:00 AM – 12:00 PM

Advanced Mathematics - Fee \$210.00*

This class is offered for BPS students who completed 5th grade during the 2011-2012 school year. This class reflects the Birmingham Public School District's math curriculum and will be taught by BPS staff. This comprehensive class is structured for BPS students who want to sharpen their math skills. Emphasis will be placed on utilizing skills and applying math concepts to problems and projects. This course will help prepare students for the future by focusing on the upcoming school year's concepts as well. This is a math based enrichment course that aims to challenge the student that is already excelling in their mathematics courses during the regular school year.



Mathematics Review (6th Grade) - Fee \$210.00*

This course reflects the Birmingham Public School District's 6th grade math curriculum and is designed for students who need to review and strengthen their mathematical skills to be prepared for the upcoming academic year. The curriculum will include a review of computation, estimations, measurement, geometry, fractions, patterns and functions and the fundamental concepts of algebra. Assessments and evaluations will be given to track each student's progress throughout the course.

Language Arts Review (Grades 6-7) - Fee \$210.00*

This course is designed to enhance students' reading and writing skills. The main area of focus will be: The 6+1 Traits of Writing, the writing process, and Literature circles. Students will read and analyze a novel. Students will also practice Narrative and Informational Writing, with an emphasis on language usage and mechanics. Novels may include *Percy Jackson and the Lightning Thief* and/or *Maniac Magee*.

Language Arts Review - Fee \$210.00*

This course is designed to enhance students' reading and writing skills. The main area of focus will be: The 6+1 Traits of Writing, the writing process, and Literature circles. Students will read and analyze a novel. Students will also practice Informational Writing, with an emphasis on speaking and listening through an oral presentation. Novels may include *The Hunger Games*, *Shane*, and/or *The Adventures of Tom Sawyer*.



Books: Education, Entertainment and Enrichment - Fee \$210.00*

This class is designed to help students exiting 5th grade to read and understand novels. The class will be taught using the Literature circle method allowing students to master vocabulary, comprehension, summarizing, and author's viewpoint. Students will incorporate reading and writing through their daily practice. Titles may include: *James and the Giant Peach*, *Charlie and the Chocolate Factory*, and/or *Peter Pan*. Informational texts, articles, and multi-media will be included to aid in comprehension of the chosen novel.



Advanced Mathematics (Grades 6-7) - Fee \$210.00*

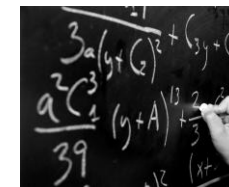
This comprehensive class is structured for students who want to sharpen their math skills. Emphasis will be placed on utilizing skills and applying math concepts to problems and projects. This course will help prepare students for the future by focusing on the upcoming school year's concepts as well. This is a math based enrichment course that aims to challenge the student that is already excelling in their mathematics courses during the regular school year.

Mathematics Review (7th Grade) - Fee \$210.00*

This course reflects the Birmingham Public School District's 7th grade math curriculum and is designed for students who need to review and strengthen their mathematical skills to be prepared for the upcoming academic year. The curriculum will include a review of computation, estimations, measurement, geometry, fractions, patterns and functions and the fundamental concepts of algebra. Assessments and evaluations will be given to track each student's progress throughout the course.

Mathematics Review - Fee \$210.00*

This course reflects the Birmingham Public School District's 8th grade math curriculum and is designed for students who need to review and strengthen their mathematical skills to be prepared for the upcoming academic year. The curriculum will include a review of computation, estimations, measurement, geometry, fractions, patterns and functions and the fundamental concepts of algebra. Assessments and evaluations will be given to track each student's progress throughout the course.



Attention 8th Grade TRANSITION TO HIGH SCHOOL

Additional classes for exiting 8th graders are located on the back panel of the brochure.

CLASSES MEET MONDAY THROUGH FRIDAY, JUNE 19 – JULY 6 AT SEAHOLM HIGH SCHOOL.

*REGISTER BEFORE MAY 25, 2012 AND RECEIVE A \$10.00 DISCOUNT PER CLASS! BPS RESIDENTS QUALIFY FOR AN ADDITIONAL \$10.00 DISCOUNT PER CLASS.